

**Board of Commissioners**  
 Thomas F. Mark, Chairman  
 Jason R. Jones, Vice Chairman  
 Denny Bucher  
 George S. Liner  
 Theron L. McCabe  
 Etteinne "E.T." Mitchell  
 Johnnie Sampson, Jr.

# Craven County



**Administration Building**  
 406 Craven Street  
 New Bern, NC 28560  
 Fax 252-636-2728  
 hr@cravencountync.gov

**Administrative Staff**  
 Jack B. Veit, III, County Manager  
 Gene Hodges, Assistant County Manager  
 Nan Holton, Clerk to the Board  
 Amber M. Parker, Human Resources Director  
 Craig Warren, Finance Director

Commissioners 252-636-6601  
 Manager 252-636-6600  
 Finance 252-636-6603  
 Human Resources 252-636-6602

Contact: Amber Tabarrini  
 (252) 631-8002

## Craven County Confirmed COVID-19 Cases Current as of 05/08/20, 11:30 am

Craven County has 49 confirmed COVID-19 cases as of 11:30 a.m. on May 8, 2020. Out of the 49 confirmed positive cases, 36 of those individuals have recovered, are doing well, and are out of isolation. The recovered cases completed the necessary isolation requirement and have been free of COVID-19 symptoms for at least 72 hours. Of the 49 cases, seven have been related to out of state travel, 23 are from community transmission, and 19 are a direct contact with a previously confirmed positive. There have been four deaths related to COVID-19. None of the active COVID-19 cases are currently hospitalized.

When using the NCDHHS COVID-19 site to stay up to date, please keep in mind that county case numbers may change once residency is verified. Therefore, the total number on the county map may differ from the number of Craven County Cases.

Total Confirmed Cases Craven County	Active Cases Craven County	Recovered Craven County	Deaths Craven County	Currently Hospitalized Craven County
49	9	36	4	0

It is important to recognize there are many people with COVID-19 who will not be included in daily counts of laboratory-confirmed cases, including:

- People who had minimal or no symptoms and were not tested.
- People who had symptoms but did not seek medical care.
- People who sought medical care but were not tested.
- People with COVID-19 in whom the virus was not detected by testing.

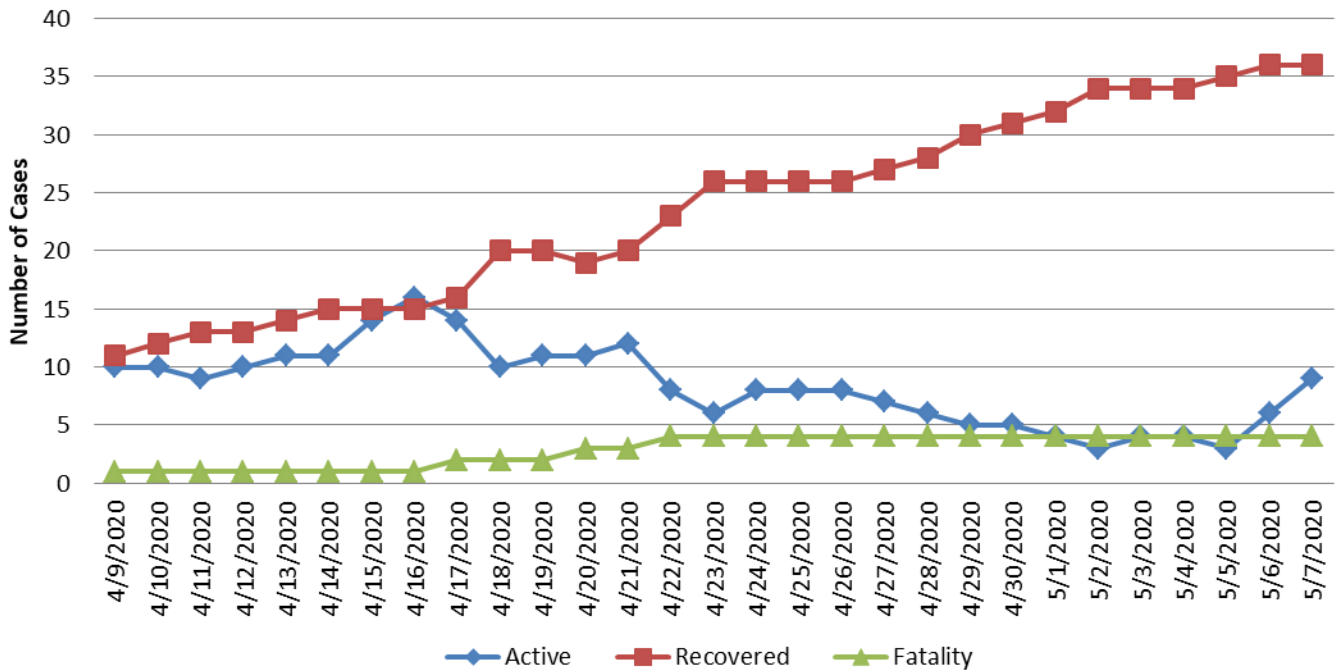
The number of laboratory-confirmed cases will increasingly provide a limited picture of the spread of infections in Craven County as COVID-19 becomes more widespread and the number of infected people who are not included in the daily counts of laboratory-confirmed cases increases.

### Craven County COVID-19 Cases by Age and Gender

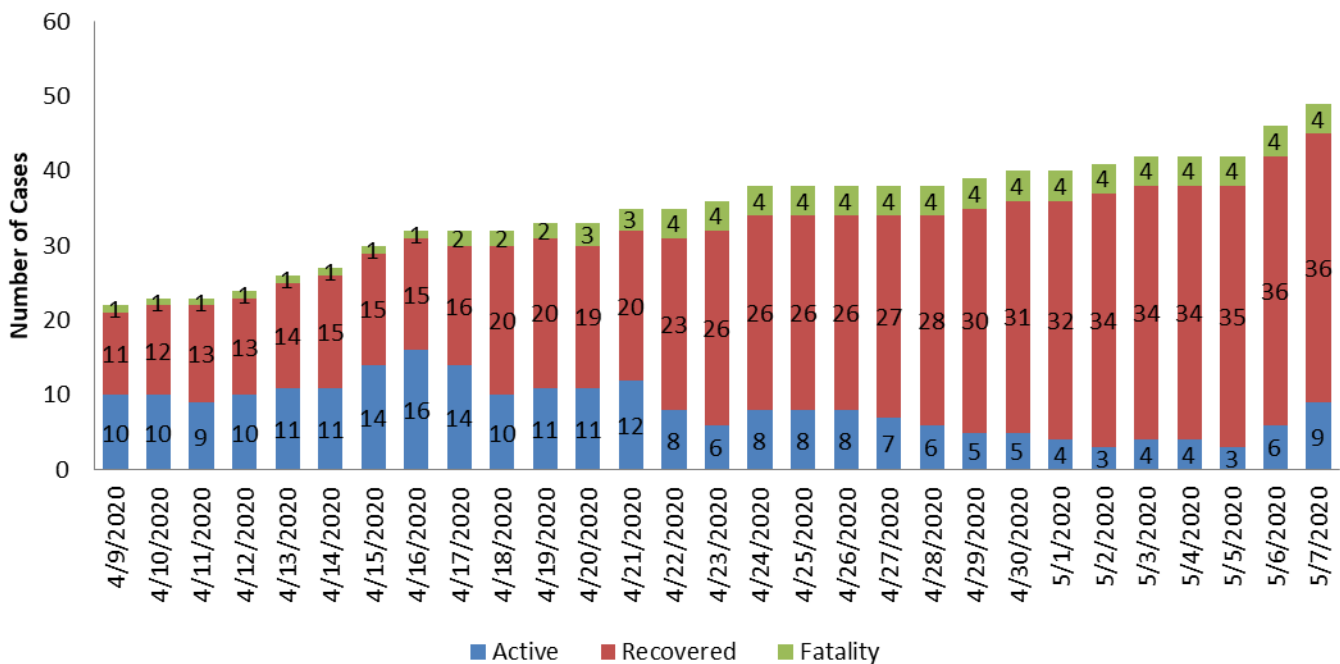
AGE	0-17	18-24	25-49	50-64	65+
Percent of Total Cases	2%	6%	33%	31%	29%

GENDER	Male	Female
Percent of Total Cases	51%	49%

## Craven County COVID-19 Cases



## Craven County COVID-19 Cases



Note: As you review the data, please be aware this data is preliminary and may change as cases are investigated. Percentages may not sum to 100% due to rounding. Also, the data is representative of the confirmed cases, not of all COVID-19 cases in Craven County.